

Section A
(36 marks)

Question 1 to Question 10

Instruction: For these questions, you are given four choices which are A, B, C and D. Choose the **best** answers.

1. Most companies use _____ to protect network resources from outsiders and to restrict employees' access to sensitive data such as payroll or personnel records.
 - A. firewall
 - B. antivirus
 - C. antispyware
 - D. cryptography

2. An example of output device is the _____ .
 - A. mouse
 - B. monitor
 - C. scanner
 - D. keyboard

3. Which application software that enables users to create, edit, format and print textual documents.
 - A. Graphic
 - B. Presentation
 - C. Spreadsheet
 - D. Word Processing

4.

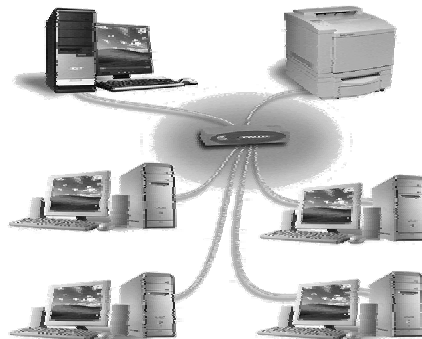


FIGURE 1

- Based on the network illustrated in Figure 1, the central device that provides a common connection point for nodes in the network is called _____ .
- A. hub
 - B. printer
 - C. file server
 - D. personal computer
-
5. A movie that combines audio, graphics and animation is still considered as a _____ multimedia content since the user is a passive receiver of the content.
 - A. linear
 - B. graphic
 - C. animation
 - D. non-linear

6. Which of the following statement shows the result of practicing computer ethics?
- A. Good relationship between human beings.
 - B. Motivating professional to steal others' ideas.
 - C. Contributing to society with his or her knowledge.
 - D. Producing a wealthy professional with personal profit.
7. Marina spreads news that a footballer is receiving bribes by using her blog website. Marina's conduct is called _____ .
- A. Hacking
 - B. Cracking
 - C. Gossiping
 - D. Slandering
8. Malicious software (Malware) is a term that can be used to describe
- I. Worms
 - II. Spyware
 - III. Backdoors
 - IV. Trojans
- A. I and II
 - B. I and III
 - C. I, II and III
 - D. I, II, III and IV
9. Arrange the programming languages given below from the earliest generation to the latest.
- A. FORTRAN, Prolog, SQL
 - B. FORTRAN, SQL, Prolog
 - C. SQL, FORTRAN, Prolog
 - D. Prolog, SQL, FORTRAN
10. Ramu wants to create a patient database for a clinic. What are the fields required for the database?
- I. Patient ID
 - II. John
 - III. Address
 - IV. Cancer
- A. I and II
 - B. I and III
 - C. II and III
 - D. III and IV

Question 11 to Question 17

Instruction: Fill in the blank with the correct answers.

11. A criminal activity that is related to the use of computers is defined as _____ .
12. Data that has been processed and organized in a way that people find meaningful and useful is called _____ .
13. _____ is a collection of data organized in a manner that allows the user to access, retrieve and use the data.

14. A _____ is a set of words, symbols and codes that enables human to communicate with computers.
15. Ali connects three computers in his office. The type of network that he used is called a _____. Ali's customer, David who lives in Singapore connects his computer to Ali's new networks. This type of network is called a _____.
16. A collection of _____ bits is called a byte. A byte represents a single _____ in the computer.
17. Software is a program which consists of a set of instructions that tells the computer how to perform an operation. The two types of software are _____ and _____.

Question 18 to Question 22

Instruction: Decide whether the given statements are **True** or **False**.

18. Privacy means that we have the right not to disclose our personal details. ()
19. The authentication technology using biometric for example Hand Scanning involves the measurement and analysis of the fingerprint. ()
20. An information system is a set of hardware, software, data, people and procedures that works together to produce information. ()
21.

Khairol received an email with an attachment file from his friend who lives in London. He must ensure that the file is free from virus before he opens it.
--
- i. Khairol must have a modem to access his email. ()
- ii. Khairol uses application software to ensure the file is virus free. ()
22.

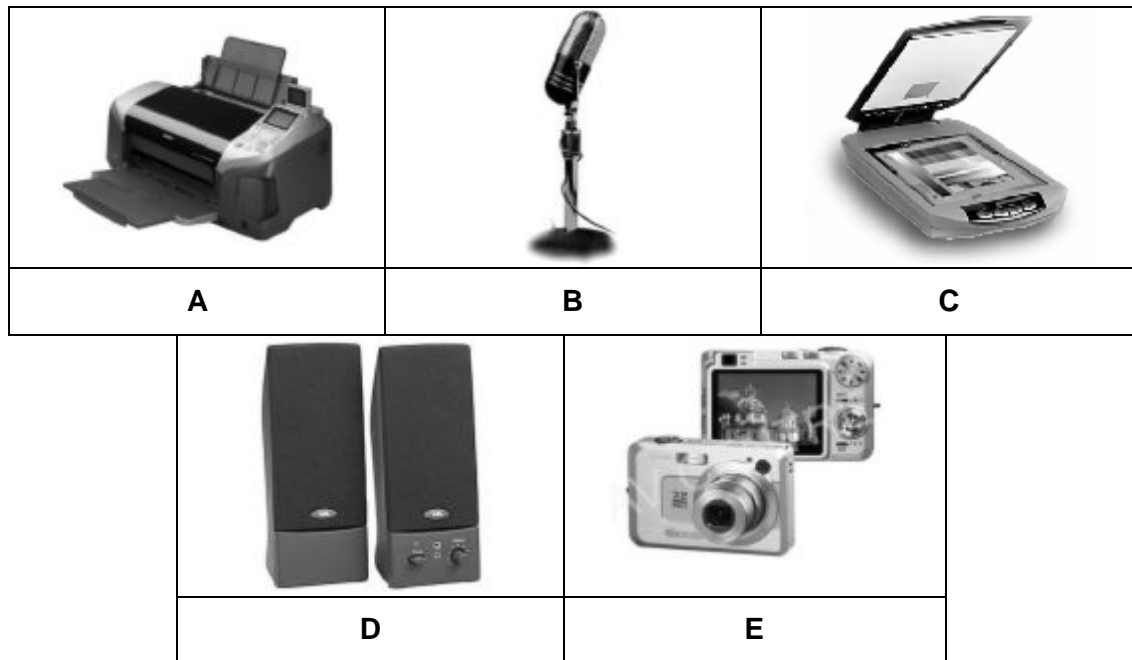
Since 1941, it took about 30 years for the first generation of computer to evolve to the fourth generation. The growth of the computer industry has helped the inventions of new computer technologies.

- i. Artificial Intelligent is one of the technology that had been introduced in fourth generation. ()
- ii. Hardware technology such as silicon chips, microprocessor and storage devices were invented during that evolution. ()

Question 23 to Question 25

Instruction: Match the following statements to the list or pictures given.

23.



Match the statements below to the pictures given.

- i. The device used to transform conventional images to the digital images. ()
- ii. The device used to record voice. ()
- iii. The device used to capture digital image. ()

24.

Item	Programming Language
P	C++
Q	Java
R	Prolog
S	Machine Language
T	Assembly Language

TABLE 1

Table 1 shows a list of programming language. Match the item of the correct programming language to the given statements below.

- i. The source code is written in binary. ()
- ii. The programming language that inherits objects. ()
- iii. The programming language that makes computer thinks like human. ()

25.

Item	Statement
P	Converts digital signals to analog signals and vice versa.
Q	Commonly used to connect signal of a LAN contains multiple ports.
R	Adapter card that enables computer or device to access network.
S	Connects networks that use the same protocol.
T	Connects networks and transmits data to correct destination on network.

TABLE 2

Table 2 shows a list of hardware. Match the correct items that represent the statement that best describe the hardware given below.

- i. Modem : _____
- ii. Router : _____
- iii. Network Interface Card : _____

Section B
(20 Marks)

Instruction: Section B consists of 5 questions. Answer all questions.

Question 1

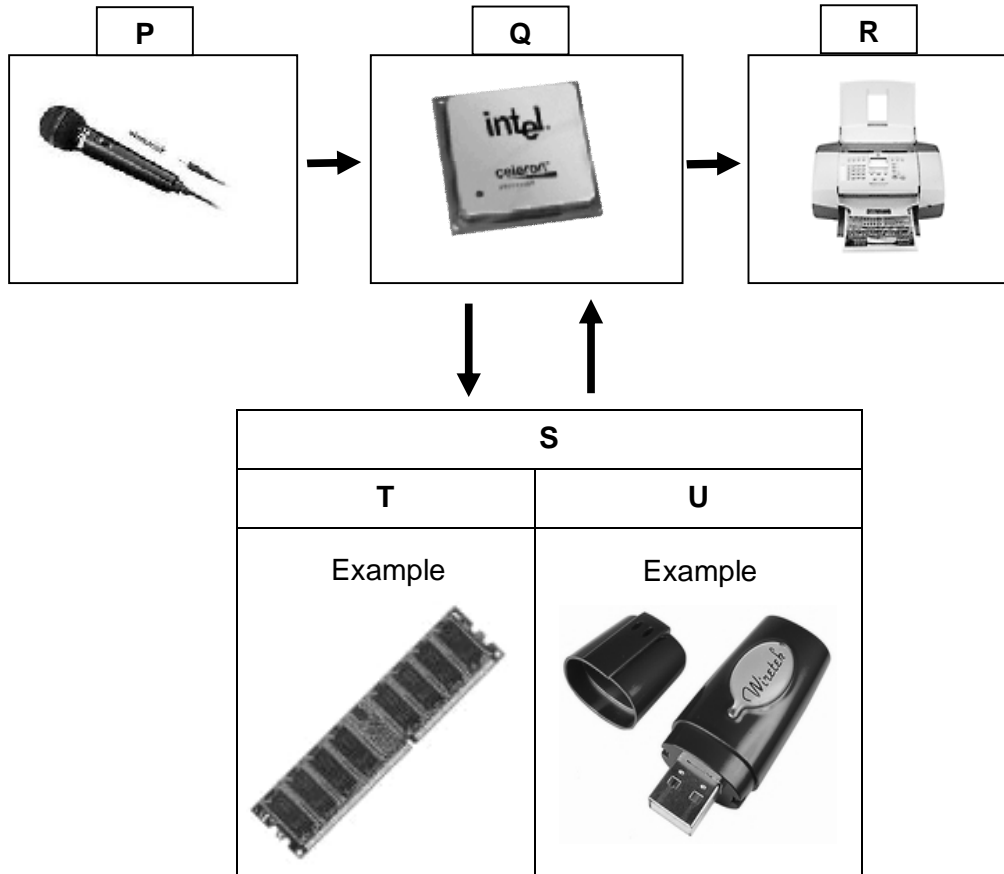


FIGURE 2

- a. Figure 2 shows the block diagram of information processing cycle.
 - i. Identify R (1 mark)
 - ii. Give **ONE** function of T. (1 mark)

Operating System is a set of program that schedules tasks, allocates storage and presents a default interface to the user between applications.

- b. The extract above is a definition of Operating System. List **TWO** examples of Operating System. (2 marks)

Question 2

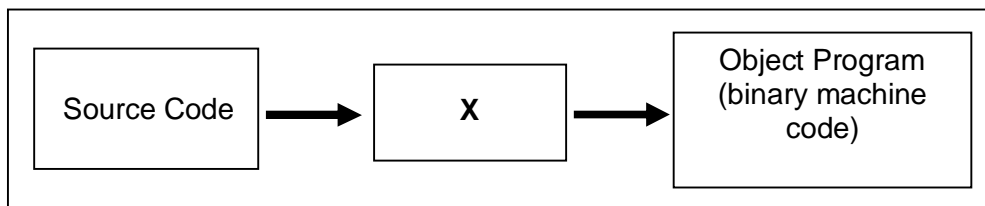


DIAGRAM 1

Diagram 1 shows how a computer runs a program. In this process, the codes are translated into machine language before the program is executed.

- Give one example of low-level programming language. (1 mark)
- State how **X** executes a program. (3 marks)

Question 3

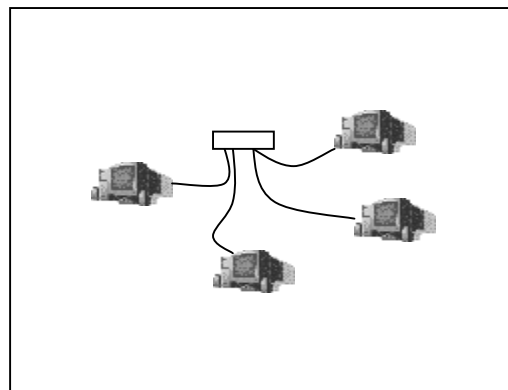
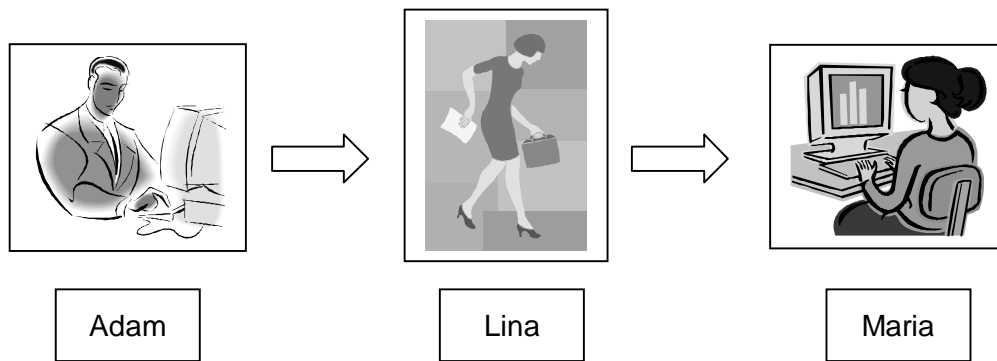


FIGURE 3

Ahmadi is setting up a network in computer lab as shown in Figure 3.

- List two devices needed to set up the computer network. (2 marks)
- Give the usages of a straight cable and a crossed cable. (2 marks)

Question 4



Adam works as a manager in a finance company. He wants to send a top secret report to Maria who is working in another branch. Adam asks Lina, his secretary, to send this report to Maria. When Lina tries to read the report, she finds out that the report has been encrypted.

- a. Why does Adam encrypt the report? (1 mark)
- b. What is the term given to the encrypted text in the report? (1 mark)
- c. What do Adam and Maria need to have in order to create and read the report? (2 marks)

Question 5

A group of foreign students are visiting your school. As the president of your school Multimedia Club, you are asked to form a team to develop a project of an interactive multimedia presentation to introduce your school to the visitors and other schools in your state in future.

- a. What is multimedia? (1 mark)
- b.

Phase	Description
X	The multimedia developers interview the clients to find out their needs and writes the problem statement and a proposal.
Y	The multimedia developer will design a flow chart and storyboard.
Z	The multimedia developer will use a checklist to test the multimedia program. If there are errors, he will fix the program.

TABLE 3

Table 3 shows the phases of multimedia development. Identify phases X, Y, and Z based on the description given. (3 marks)

SECTION C
(14 marks)

Instruction: This section consists of three questions. Answer only **TWO** questions. Question 1 is compulsory. Choose either Question 2 or Question 3.

Question 1

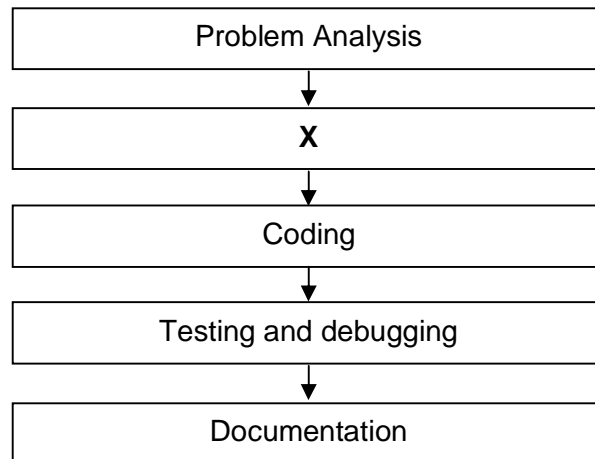


FIGURE 4

Figure 4 shows the five phases involved in program development. Based on the figure above, answer the following questions.

- a. State phase X. (1 mark)
- b. Describe **ONE** of the program development phases. (2 marks)
- c.
 - i. State **ONE** programming language other than Visual Basic.
 - ii. Name **ONE** of the tools available in Visual Basic. (2 marks)
- d. Draw a flowchart to show how a program calculates the area of a rectangle. (2 marks)

Question 2

Read the **situation** below, then answer the questions given.

Steven uses his computer daily. Lately he faces some system problem. Some of his files keep on duplicating itself. It is probably caused by viruses. In order to solve this problem, he needs to install an antivirus software.

- a. What is an antivirus software? (2 marks)
- b. Give **ONE** example of antivirus software. (1 mark)
- c. State **TWO** effects if a computer is infected by viruses other than the one mentioned above. (2 marks)
- d. Suggest **TWO** ways to prevent a computer from being infected by viruses? (2 marks)

Question 3

Mr. Tan is the manager of IBC Corporation. He wishes to computerize the management in his company. He employs Mr. Kamal to develop a Management Information System.

a. State **ONE** usage of Management Information System that will be used by Mr. Tan. (1 mark)

b.

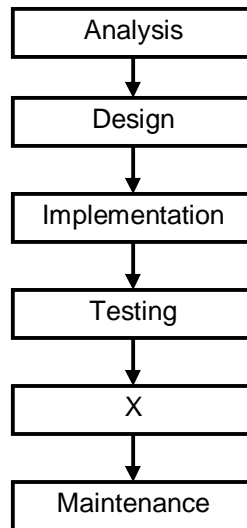


FIGURE 5

Mr. Kamal will go through several phases to develop the system as shown in Figure 5. Describe phase X. (2 marks)

c. When the information system is implemented in IBC Corporation, it will involve five components, namely people, hardware, software, procedure and data. Show the interrelation between information systems components using a diagram. (2 marks)

d.

StaffID	DateStartWork	JobPosition	BasicSalary	TypeOfAllowance	BonusEntitled
1867800622	01/02/2006	S	800	T	300
1253053797	01/01/2006	MI	3600	H	1200

FIGURE 6

Figure 4 shows X is a field, Y is a record in a table. Define X and Y. (2 marks)

Nama Calon:																	
No. Kad Pengenalan									-			-					
Angka Giliran																	
Question	Answer															Score	
1																	1
2																	2
3																	3
4																	4
5																	5
6																	6
7																	7
8																	8
9																	9
10																	10
11																	11
12																	12
13																	13
14																	14
15	(i)																15
	(ii)																16
16	(i)																17
	(ii)																18
17	(i)																19
	(ii)																20
18																	21
19																	22
20																	23
21	(i)																24
	(ii)																25
22	(i)																26
	(ii)																27
23	(i)																28
	(ii)																29
	(iii)																30
24	(i)																31
	(ii)																32
	(iii)																33
25	(i)																34
	(ii)																35
	(iii)																36