

Name : _____

CONFIDENTIAL
3765/1
ICT 1
Trial Exam
2 1/2 Hours

JABATAN PELAJARAN NEGERI PULAU PINANG

TRIAL EXAMINATION 2007

FORM 5

INFORMATION AND COMMUNICATION TECHNOLOGY

2 hours and 30 minutes

DO NOT OPEN THIS BOOKLET UNTIL INSTRUCTED

READ THE INSTRUCTION CAREFULLY

1. Section A consists of 36 questions. Answer ALL questions.
2. Section B consists of 5 questions. Answer ALL the questions in the space provided.
3. Section C consists of 3 questions. Question 1 is compulsory. You can choose to answer Question 2 or Question 3. Answer in the space provided.

Name : _____

SECTION A (36 SCORES)

ANSWER ALL QUESTIONS IN THE SPACE PROVIDED.

QUESTIONS 1-11 : Choose the best answer from the options given.

1. Computer crimes are usually
 - A. prosecuted
 - B. easy to detect
 - C. blue-collar crimes
 - D. committed by insiders

2. Companies useto protect network resources from outsiders and to restrict employees' access to sensitive data such as payroll or personnel records.
 - A. antivirus
 - B. antispymware
 - C. cryptography
 - D. firewall

3. Image scanner is an example of _____ used for graphics.
 - A. peripherals
 - B. input devices
 - C. output devices
 - D. storage devices

4. An example of output device is the _____
 - A. mouse
 - B. monitor
 - C. scanner
 - D. keyboard

5. Identify which types of application software that enables users to create, edit, format and print textual documents.
 - A. Graphic
 - B. Presentation
 - C. Spreadsheet
 - D. Word Processing

6. These are a standard format for graphic EXCEPT
 - A. cat.jpg
 - B. hunter.mpg
 - C. flower.tiff
 - D. duck.gif

7. The computer network type designed for a city is called _____.
 - A. LAN
 - B. MAN
 - C. WAN
 - D. PAN

Name : _____

8. Which of the following the functions of Operating System.

- I. Starting the computer
- II. Providing a user interface
- III. Managing data and program
- IV. Managing memory

- A. I, II AND III
- B. I, II AND IV
- C. II, III AND IV
- D. I, II, III AND IV

9. On a network such as the one illustrated in Figure 1, the central device that provides a common connection point for nodes on the network is called the _____.

FIGURE 1



- A. hub
- B. printer
- C. personal computer
- D. file server

10. Malware is a term that can be used to describe

- I. Worms
- II. Spyware
- III. Backdoors
- IV. Trojans

- A. I and II only
- B. I and III only
- C. I, II and III only
- D. I, II, III and IV

11. Arrange the programming languages given below from the earliest generation to the latest.

- I FORTRAN
- II Prolog
- III SQL

- A I, II, III
- B I, III, II
- C II, I, III
- D II, III, I

Name : _____

QUESTIONS 29 – 36 : Look at the pictures in Figure 3. Then, write the Alphabet in the correct box to match with the correct devices.

Number	Name
29	Card Reader
30	Scanner
31	Keyboard
32	Speaker

Number	Name
33	Mouse
34	USB Flash Drive
35	Printer
36	Monitor



Figure 3

Name : _____

SECTION B (20 SCORES)

THIS SECTION CONSISTS OF 5 QUESTIONS. ANSWER ALL QUESTIONS.

Question 1

- a) Define ICT.
- b) Define what is cyber law.

Question 2

- a) What is computer theft?
- b) List 3 of computer threats to the computer security?

Question 3

- a) Give 2 differences between computerized and non-computerized system in banking.
- b) List 4 usages of ICT in everyday life.

Question 4

- a) State the definition of **PROGRAM**.
- b) Name three translation method of programming

Question 5

- a) Define **Information System**.
- b) List the Information System components:

SECTION C (14 SCORES)

This section consists of THREE questions. Question 1 is compulsory. You can choose to answer Question 2 OR Question 3.

Question 1 (7 Scores)

A portal is a **multimedia** web site that offers a variety of Internet services from a single location. Companies often create their own portals for use by employees, vendors and customers.

- a. What it is mean by the term of **Multimedia**?
- b. Explain at least two Multimedia Application in education.

Name : _____

CHOOSE QUESTION 2 OR QUESTION 3

Question 2 (7 Scores)

You are employed as a Technical Support Coordinator in the Information Technology department. Your manager has asked you to set up client/server network that will link employee computers.

- a) Identify four devices needed in computer network communication
- b) Draw two types of network topologies:

Question 3 (7 Scores)

Figure 4 shows the five phases involve in program development.

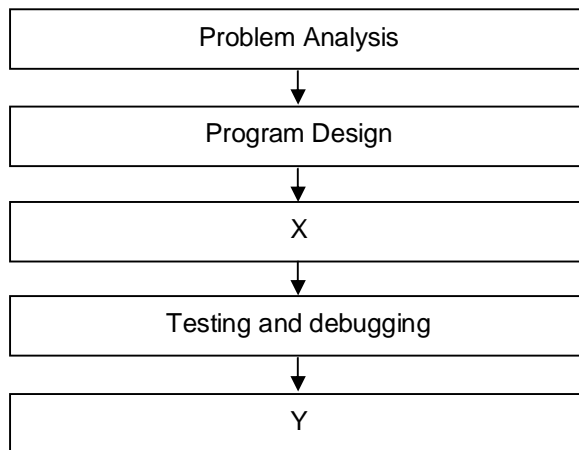


Figure 4

Answer the following questions according to Figure 4.

- a. State the development phase represented by X.
- b. Describe any three of the program development phases.

_____ All the Best _____