

**SECTION A : ANSWER ALL QUESTIONS**

**Instructions: Choose the correct answer**

1. Communication is an act of transmitting \_\_\_\_\_.
  - A. Data
  - B. Messages
  - C. Knowledge
  - D. Information
  
2. A/An \_\_\_\_\_ is the result of raw input data that has been processed by the Central Processing Unit into meaningful information.
  - A. input
  - B. output
  - C. storage
  - D. processor
  
3. Figure 1 shows the examples of \_\_\_\_\_ devices.

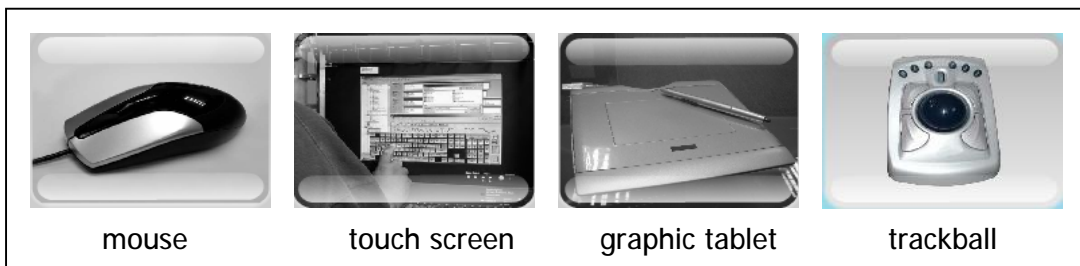
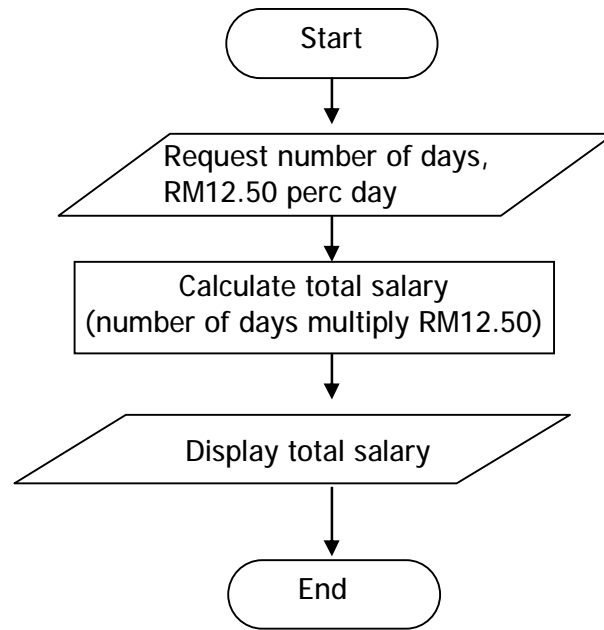


Figure 1

- A. input
  - B. output
  - C. storage
  - D. pointing
  
4. Modem stands for \_\_\_\_\_.
  - A. Motivator/ Demotivator
  - B. Modulator/ Demodulator
  - C. Modelling/ Demodelling
  - D. Modes/ Demonstrations

5. It is a radio standard and communications protocol primarily designed for low power consumption, within a short range. It is also known as IEEE 802.15.1.
- A. Bluetooth
  - B. Satellite
  - C. Infrared
  - D. Wireless Access Point
6. \_\_\_\_\_ is the first phase in the multimedia production.
- A. Design
  - B. Analysis
  - C. Evaluation
  - D. Implementation
7. Below are the Information System components except
- A. Data
  - B. Computer
  - C. Hardware
  - D. Software
8. Arrange the data below with the correct hierarchy.
- I. Record
  - II. Bit
  - III. Field
  - IV. File
  - V. Byte
- A. I, II, III, IV,V
  - B. I, II, IV,III,V
  - C. II, III, IV,V,I
  - D. II, V, III, I, IV

9. What is the outcome of this flow chart if the number of days is equals to 6?



- A. RM55.00  
B. RM65.00  
C. RM75.00  
D. RM99.00
10. Which statements below are correct about computer law
- I. As a rule to control computer users.
  - II. Must be followed by the users.
  - III. As a guideline to computer users.
  - IV. Depends on country and state where the crime is committed.
- A. I, II, III  
B. I, II, IV  
C. I, III, IV  
D. II, III, IV
11. If ASCII code 00110000 equals to 0 and 01000001 equal to A, what is the ASCII code for number E3?
- A. 00110011 01000101  
B. 00110101 00110011  
C. 01000101 00110011  
D. 01000101 01000101

12. The examples of secondary storage are \_\_\_\_\_.

- I. cd writer
- II. diskette
- III. pen drive
- IV. flash memory card

- A. I, II and III
- B. I, II and IV
- C. I, III and IV
- D. II, III and IV

13. The implementation phase in the multimedia production tasks consists of:

- I. Inserting audio objects
- II. Identify the problem
- III. Inserting animation graphics
- IV. Creating texts and changing objects attributes

- A. I, II and III
- B. I, II and IV
- C. I, III and IV
- D. II, III and IV

14. Which type of control structure is represented by the following pseudocode?

```
BEGIN
Request ID
If ID is equal to AK73G4J Then
    print "You are allow to access the data base"
Else
    print "Sorry, your ID is not correct"
End If
END
```

- A. Request control structure
- B. Repetition control structure
- C. Sequence control structure
- D. Selection control structure

15. Read the statement below.

The program will first request the student's identity card numbers. And then the system will Greet "Welcome" with the student's name. Then, the program will request the student to enter the type of examination. After calculating, the program will display the result.

Rearrange the pseudo code statements given below to represent a program that calculate a student's result for the mid year examination.

- I. Print student's result
- II. Calculate student's total mark
- III. Print "Welcome" with the student's name
- IV. Request student's identity card numbers
- V. Request student's type of examination

- A. V, II, III, IV, I
- B. III, II, V, I, IV
- C. V, I, II, III, IV
- D. IV, III, I, V, II

16. The table below is created based on a programming language.

Final Result of ICT				
	Name	Student ID	Average Marks	Pass
	Rosita	98502	72.50	True
	Kok Keong	98512	52.55	True
	Mohan	98342	31.70	False
	Zamri	98126	38.20	False
Data Type :	X	Integer	Double	Y

Answer the questions by referring to the table given.

- a. What is the data type for X?
- A. String
  - B. Integer
  - C. Double
  - D. Boolean
- b. Data type Y is important to declare a statement of True or False.  
What is data type for Y?
- A. String
  - B. Integer
  - C. Double
  - D. Boolean

**Question 17 - 22**

**Instruction: Determine whether the statements given below is true or false.**

No.	Statement	TRUE / FALSE
17.	The transistor is used to transfer the electronic signal across the resistor.	
18.	A WAN is a network that covers a large geographic area using a communication channel that combines many types of transmission media such as telephone lines, cables and radio waves.	
19.	The connector in a flow chart shows the beginning or end of a program.	
20.	Multimedia consists of three elements.	
21.	People can use the Information System in doing their tasks with little knowledge and understanding on how they function.	
22.	Data is a meaningful information to user that also can be called as processed information.	

**Question 23**

**Instruction: Choose the correct answer from the suggestions given below**

Paperless	secondary	topologies	primary	videos
	documentation	computer crime	utility	
borderless	software	animation	simplicity	picture

- a. The use of digital medium instead of paper has created a \_\_\_\_\_ environment.
- b. \_\_\_\_\_ is defined as any criminal activity that is related to the use of computers.
- c. \_\_\_\_\_ is a non volatile storage that stores program and data for later use.
- d. Software \_\_\_\_\_ helps a computer to decompress a file.
- e. Star, Ring and Bus are examples of network \_\_\_\_\_.
- f. \_\_\_\_\_ is a report writing generated at one of the phases in system development cycle.
- g. The multimedia elements consist of graphics, texts, sounds, \_\_\_\_\_ and \_\_\_\_\_.
- h. The students interface principles (CASPER) applied in designing multimedia project are Contrast, Alignment, \_\_\_\_\_, Proximity, Emphasis and Repetition.

**Question 24**

**Instructions: Fill in the blanks with the correct answer according to the situation given.**

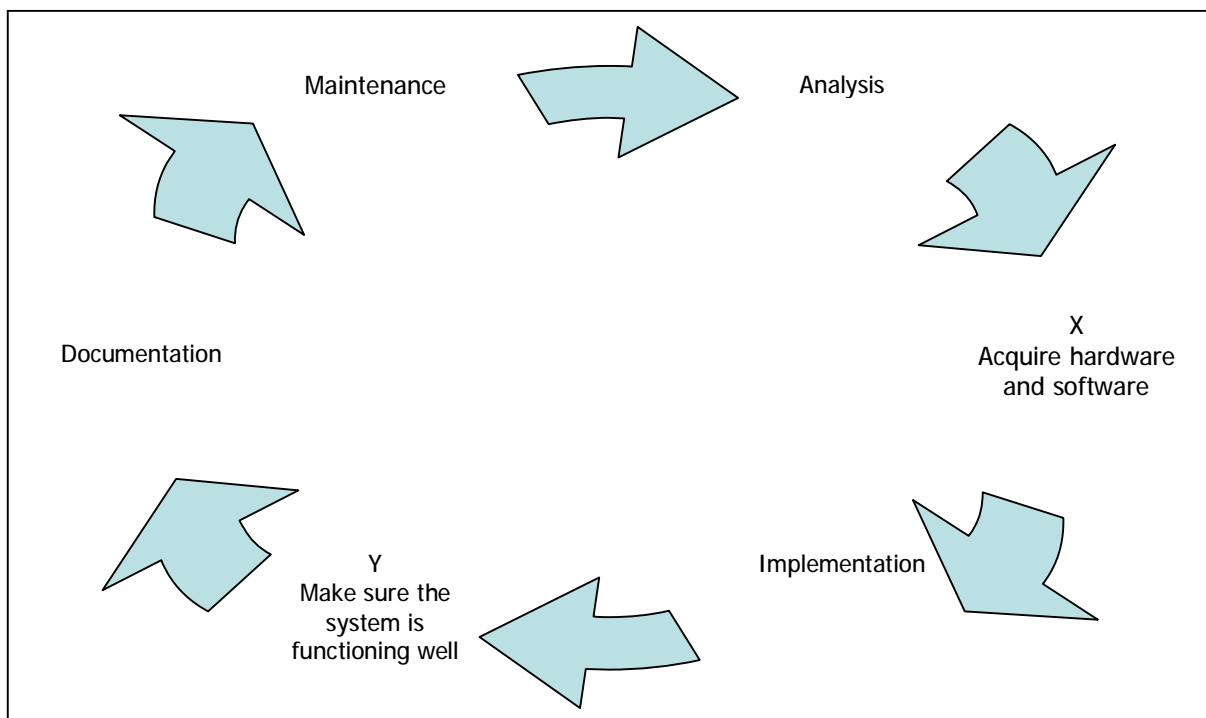
- a. This is a network architecture. It allows the network to centralise functions and applications in one or more dedicated file servers. The server is the heart of the system.

\_\_\_\_\_

- b. This is a private network within an organisation. It allows only part of the service available to the public viewing.

\_\_\_\_\_.

**Question 25**



**FIGURE 2**

Based on the **FIGURE 2** above, state the correct phases for X and Y.

- a. X: \_\_\_\_\_

- b. Y: \_\_\_\_\_

**SECTION B [ 20 marks ]**

*Answer all the question.*

1. State **two** types of application software and give an example of each.

Types of application software	Example

[ 4 marks ]

2. (a) Define computer ethics.

---

---

[ 2 marks ]

- (b) State the difference between ethics and law.

Ethics	Law

[ 2 marks ]

3. As an ICT student, you are given a task to develop a multimedia project. In order to do this project, you need some hardware and editing software.

- (a) List **two** examples of hardware needed to develop a multimedia production.

i. \_\_\_\_\_

ii. \_\_\_\_\_

[ 2 marks ]

b) State **two** editing software that can be used to enhance the multimedia elements.

i. \_\_\_\_\_

ii. \_\_\_\_\_

[ 2 marks ]

4. (a) Define Information System.

---

---

[ 2 marks ]

(b) State two types of Information System.

i. \_\_\_\_\_

ii. \_\_\_\_\_

[ 2 marks ]

5.

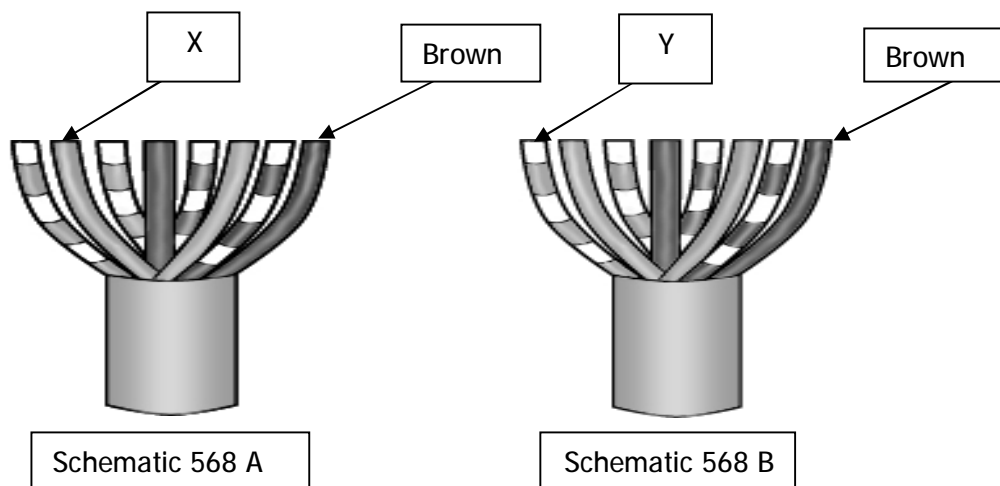


Figure 1

a. Figure 1 shows two types of schematic. Name the colours of wire X and wire Y.

X = \_\_\_\_\_

Y = \_\_\_\_\_

[ 2 marks ]

b. Figure 2 shows two personal computers which connected directly using UTP cable -Z

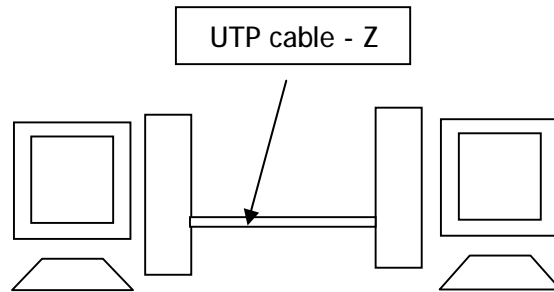


Figure 2

Name the type of cable Z.

i) Z : \_\_\_\_\_

[1 mark ]

c. State other medium used in computer network.

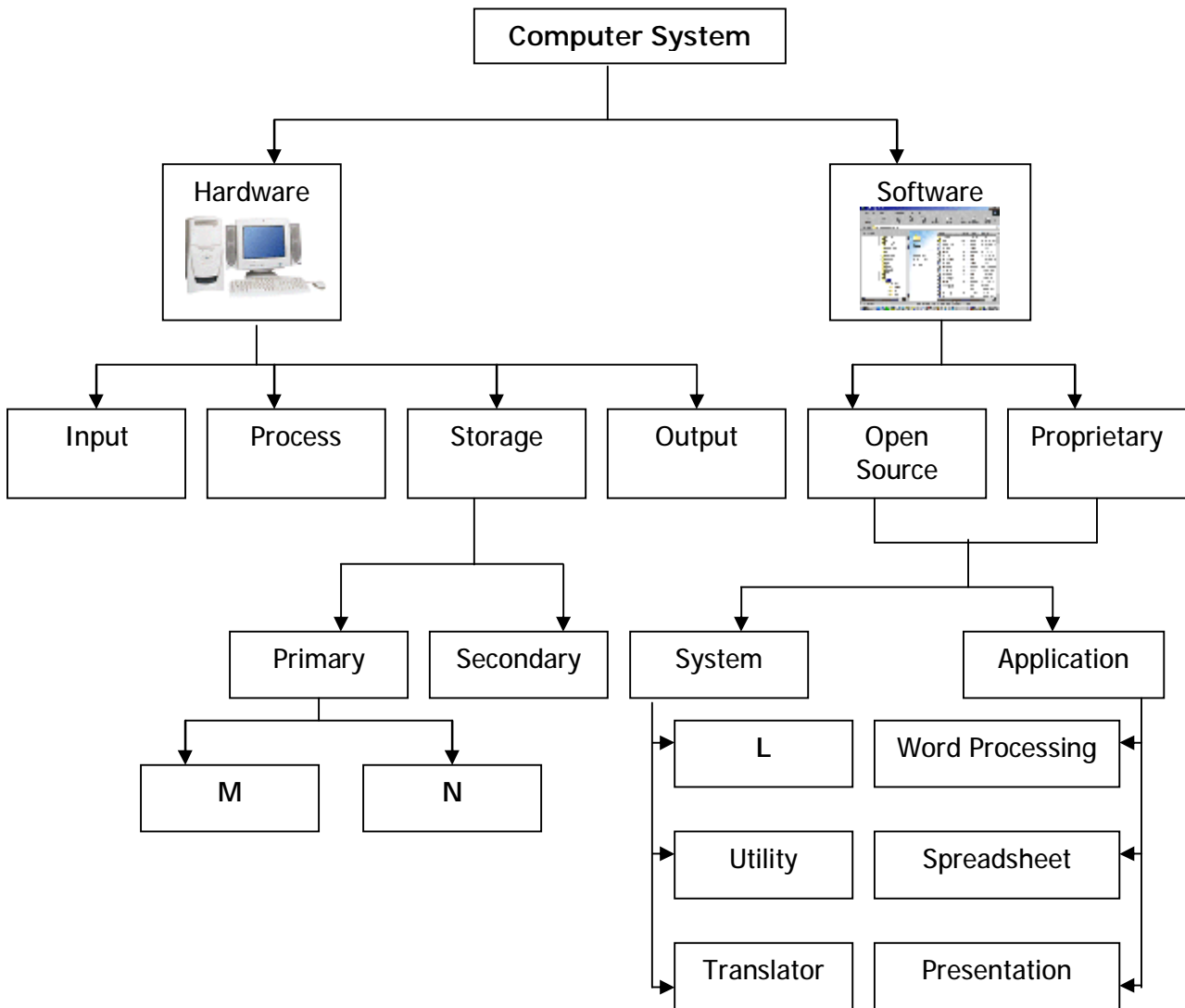
i) \_\_\_\_\_

[ 1 mark ]

**SECTION C [ 14 marks ]**

Section C consists of 3 questions. You need to answer question 1 and choose another from either question 2 or 3.

Figure 1 shows some of the components of a computer system.



**Figure 1**

Based on Figure 1, answer the following questions.

- a) Draw a block diagram to illustrate the information processing cycle. [2 marks]
- b) Identify and explain the function of L [3 marks]
- c) Identify and differentiate between M and N [3 marks]

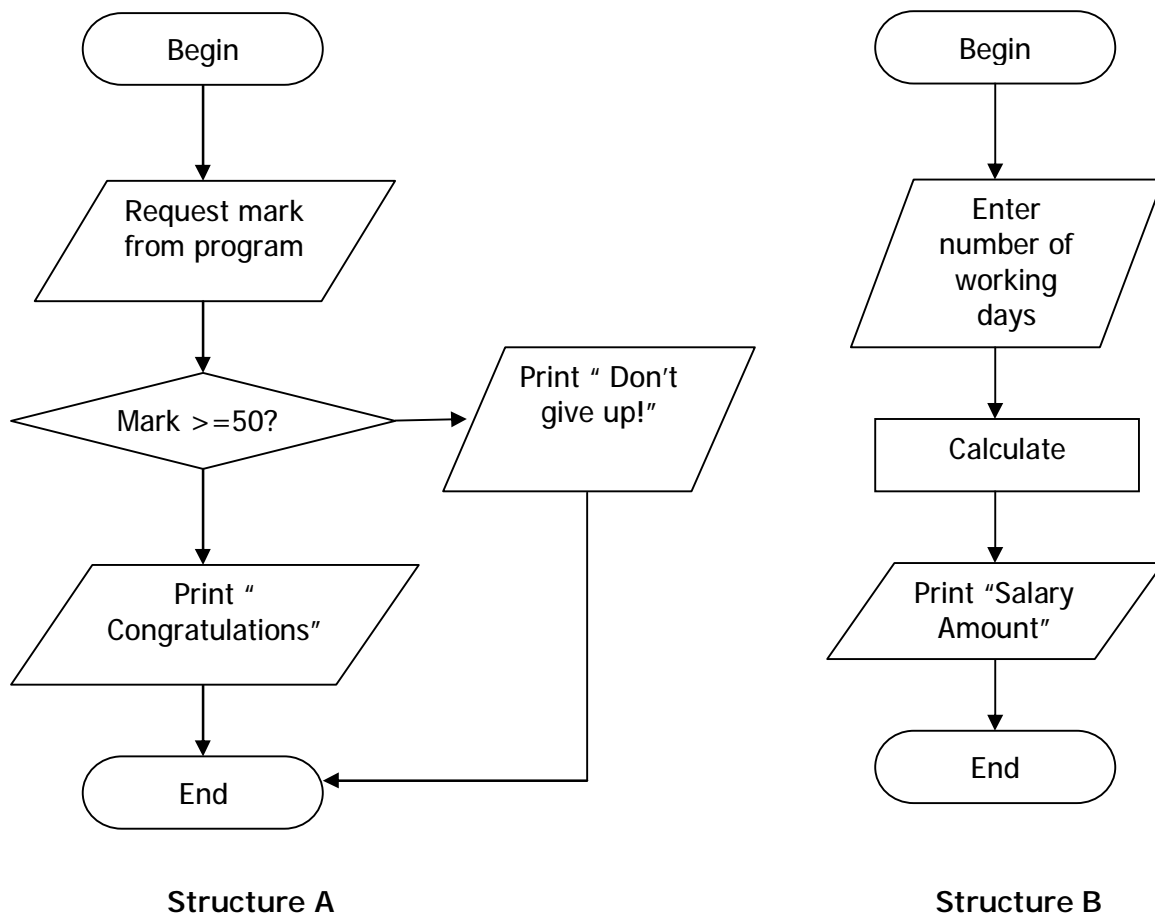
### Question 2

An Audio-Visual Room has been equipped with 10 computers and a hub. As an ICT coordinator, you are required to set up a small network in the room.

- a) Based on the situation given above, suggest a suitable topology and give one of its advantages. [2 marks]
- b) Give two advantages of using a networking rather than a stand-alone pc. [2 marks]
- c) Define *Extranet*. [2 marks]

### Question 3

Figure 2 shows two different control structures used in programming language.



- a) Define programming language. [ 1 mark ]

- b) State an example of low level programming language. [ 1 mark ]
- c) Based on Figure 2, explain the difference between structure A and structure B. [ 2 marks ]
- d) There are two types of programming approaches namely structured and object-oriented approaches. Differentiate those two approaches. [ 2 marks ]

# INFORMATION AND COMMUNICATION TECHNOLOGY

## Section A

### Helaian Jawapan Bahagian A Answer Sheet Section A

No. Kad Pengenalan <i>Identification Card No.</i>																			
No. Angka Giliran <i>Candidate's Index No.</i>																			
Kod Pemeriksa ( <i>Filled By Examiner's</i> )																			
No. Soalan Question No.	Jawapan Calon <i>Candidate's Answer (Diisi Oleh Calon Filled By Candidate's)</i>	No. Soalan Question No.	Jawapan Calon <i>Candidate's Answer (Diisi Oleh Calon Filled By Candidate's)</i>	Jumlah Markah <i>Total Marks</i> <small>(Diisi Oleh Pemeriksa <i>Filled By Examiner's</i>)</small>															
1		12					1	12											
2		13					2	13											
3		14					3	14											
4		15					4	15											
5		16					5	16   17											
6		17					6	18											
7		18					7	19											
8		19					8	20											
9		20					9	21											
10		21					10	22											
11		22					11	23											
23	a						24												
	b						25												
	c						26												
	d						27												
	e						28												
	f						29												
	g						30	31											
	h						32												
24	a						33												
	b						34												
25	a						35												
							36												