

**SECTION A (36 scores)**

*This section consists of 25 questions. Answer ALL questions in the answer sheet provided at the end of this question paper.*

**Questions 1- 10**

**Choose the BEST answers for questions 1-10.**

1. Question number 1 is based on Figure 1:

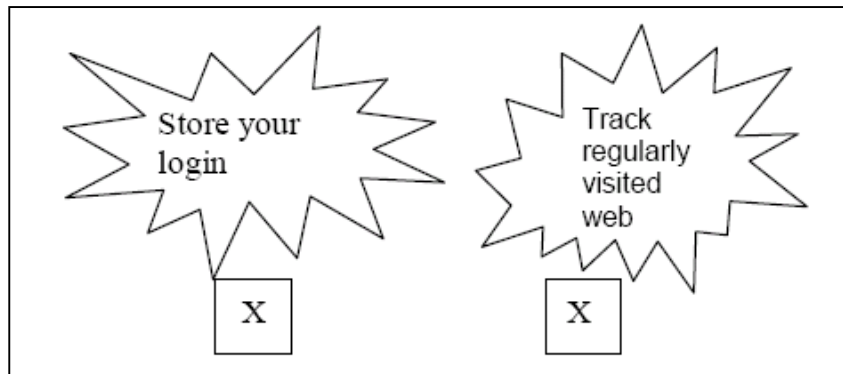


Figure 1

X is best described as

- |            |                       |
|------------|-----------------------|
| A. Spam    | C. spyware            |
| B. Cookies | D. electronic profile |
2. Transistor was invented in \_\_\_\_\_ generation.
- |          |           |          |           |
|----------|-----------|----------|-----------|
| A. First | B. Second | C. Third | D. Fourth |
|----------|-----------|----------|-----------|
3. Computer ethic refers to \_\_\_\_\_.
- |   |
|---|
| I A study about moral principal.                    |
| II A custom that guides human behaviour.            |
| III A regulation that must be obeyed by the public. |
| IV A knowledge about what is good and what is bad.  |
- |                  |                   |
|------------------|-------------------|
| A. I, II and III | C. I, III and IV  |
| B. I, II and IV  | D. II, III and IV |
4. To convert conventional images to digital images, \_\_\_\_\_ are used.
- |             |                  |
|-------------|------------------|
| A. cameras  | C. computers     |
| B. scanners | D. audio devices |
5. The risk to a bus network is that \_\_\_\_\_
- |   |
|---|
| A. the bus itself might become inoperable   |
| B. the failure of one device usually affects the rest of the network                    |
| C. devices attached or detached at any point on the bus disrupt the rest of the network |
| D. all of the above statements are true about risk to a bus network                     |

6. A \_\_\_\_\_ is a high-speed network that connects networks in an area such as a city or town and handles the bulk of communications activity across that region.
- A. Local Area Network (LAN)                      C. Wide Area Network (WAN)  
B. Metropolitan Area Network (MAN)        D. Variable Area Network (VAN)
7. There are two types of programming approaches, which are \_\_\_\_\_ programming.
- I.        object    III.        structured  
II.       design     IV.        object-oriented
- A. I and II            B. I and III            C. II and III            D. III and IV
8. One of the benefits of database is to \_\_\_\_\_.
- A. Access information easier  
B. Transform data to other format  
C. Differentiate software and hardware credits  
D. Develop the application software based on run-time.
9. Printer resolution is measured by the number of \_\_\_\_\_ a printer can output.
- A. dots per inch (dpi)    C. pixels per inch (ppi)  
B. characters per inch (cpi)    D. bits per inch (bpi)
10. Current personal computer hard disks have storage capacities from 40 to 300 \_\_\_\_\_ and more.
- A. KB                      B. GB                      C. MB                      D. PB

**Questions 11 – 15 are true and false statements.**

**Write 'T' for true statements and 'F' for false statements.**

11. During the process of creating, editing, and formatting a document, the computer holds it on a storage medium.
12. Automatic Teller Machines (ATMs) are good examples of online Transaction Processing Systems.
13. Computer-Aided Design (CAD) is an example of multimedia used in creating movies.
14. We need computer ethics and laws to guide users from misusing the computer.
- a. Using materials from websites as a resource for assignment without giving credit to the original author is considered unethical.
- b. Selling pirated software to a friend is an example of law breaking conduct.
15. Peer-to-peer networks are ideal for very large businesses and corporate users.

**Questions 16 – 20**

Match the following phrases to their correct statements below.

16. A Query	a) Someone who has the same intent as a cracker but does not have the technical skills and knowledge. They are often teenagers.
17. Script Kiddie	b) User manual, output records and program listing.
18. Documentation phase	c) The tasks of reorganizing of the disk so that the files are stored in contiguous sectors.
19. Disk Defragmenter	d) Networking within PC using cross cable.
20. Peer to peer network	e) Is a description of the records you want to retrieve from a database, based on certain criteria.

**Questions 21-25**

Fill in the blanks with correct answers.

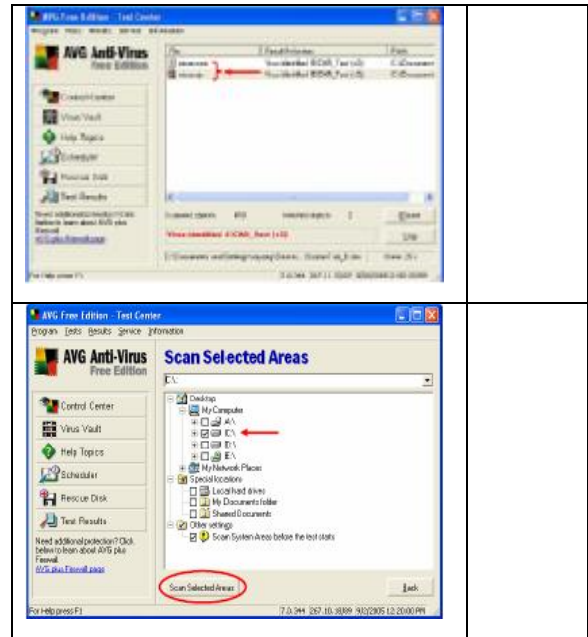
21. A computer system consists of four major hardware components; input devices, ....., ....., and .....
22. The six phases in multimedia development are....., design, ....., ..... and publishing.
23. Antivirus software is a program that ...viruses in your computer memory, storage media or incoming files. It will .....prevent and ..... computer viruses and other malicious software.
24. Program ..... and ..... helps the programmer to assess the weakness of a program.
25. They are four types of Intellectual Property protection. They are \_\_\_\_\_ for invention, \_\_\_\_\_ for brand identity, \_\_\_\_\_ for product appearance and \_\_\_\_\_ for material

**SECTION B (20 scores)**

This section consists of FIVE questions. Answer ALL questions in the space provided.

**Question 1**

The following illustrations are steps in scanning virus not in the proper order. Rearrange the steps on how to scan antivirus using 1, 2, 3 and 4 as indicators. Use the space provided at the right of each illustration. (4 scores)



**Question 2**

Below are four examples of computer software. Based on the examples, answer the questions that follow.

Microsoft excel

Windows XP

AVG AntiVirus

Zip Disk

a) Explain any two of the software given. (2 scores)

---



---

b) Explain briefly the use the software you have chosen in **Question a)** (2 scores)

---



---



---



---

**Question 3**

- a) The multimedia program that is developed can be published and distributed to the users through two common medium of delivery. They are: (2 scores)

---



---



---



---

- c) Give an example of the advantage of using multimedia in medicine. (1 score)

---



---



---



---

- e) Give an example of a task or activity that is carried out in the Design Phase of Multimedia Development. (1 score)

---



---



---



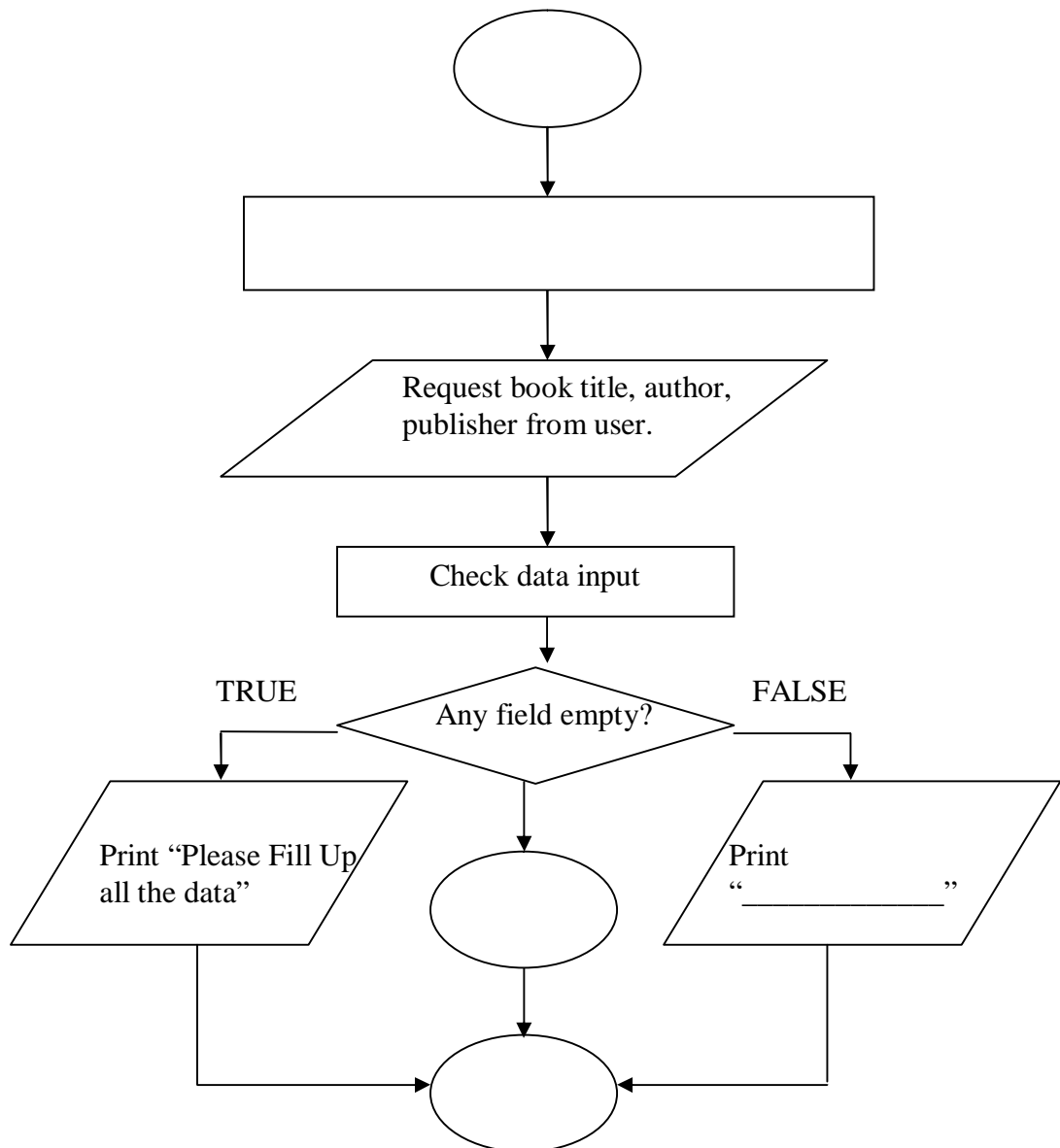
---

**Question 4**

In the school library where the number of books is increasing, librarians face problems in registering or cataloguing their books without the help of a computer system. As a programmer, based on pseudo code given, **complete the flow chart (on page 6) provided to solve the problem.**

**Library system**

<b>Purpose : Computerizes library system</b>		
<b><u>Data input:</u></b> <ul style="list-style-type: none"> <li>• Book's title</li> <li>• Author</li> <li>• Publisher</li> </ul>	<b><u>Processing:</u></b> <ul style="list-style-type: none"> <li>• Get all the data</li> <li>• Check data</li> </ul>	<b><u>Output:</u></b> <ul style="list-style-type: none"> <li>• Book registered</li> </ul>



**Question 5**

Answer the following questions on Computer Networks and Communication.

- a) Give **two** advantages of using a networking rather than a stand-alone pc. (2 scores)

---



---

- b) Define the network communication technology of *Extranet*. (2 scores)

---



---

**SECTION C (14 scores)**

*This section consists of THREE questions. You MUST answer QUESTION 1. You can choose to answer question 2 OR question 3.*

**Question 1**

**Based on the following situation, answer questions (a) – (d).**

The form teacher of 4 IT class is required to submit a report on the monthly test results for each student to the school administration.

As an ICT student, you are asked to develop a Test Marks Information System (TMIS) to assist the teachers in recording the subject marks obtained by each student. TMIS should generate a report to show the subject marks, total marks and average marks of the student from each class.

(a) Define Information System. (1 score)

---

---

**Answer Question (b) – (d) in the box provided on page 8.**

(b) Imagine that you are creating a database in the computer that consists of the following items:

- (i) **one** table for student, namely table STUDENT
- (ii) **one** table for class, namely CLASS.

You are to **DRAW** the tables of your database on the paper. The database should store student ID, name, class, form teacher and marks for each subject taken. Fill in the field names and relevant data in each table. (4 scores)

(c) Based on the table that you have drawn for question (a), **state** the Primary Key for both tables. Write your answer in the box provided. (1 score)

(d) **Show** the relationship of both tables. You can do so by drawing a line for the tables you have sketched in question (a). (1 score)

**Total: 7 scores**

<div style="border: 1px solid black; width: 90%; margin: 5px auto; height: 140px;"></div>	<div style="border: 1px solid black; width: 90%; margin: 5px auto; height: 140px;"></div>
<b>PRIMARY KEY:</b> _____ (1 score)	

**Question 2**

Figure 2 shows the phases of Program Development process. Based on the figure, answer the following questions.

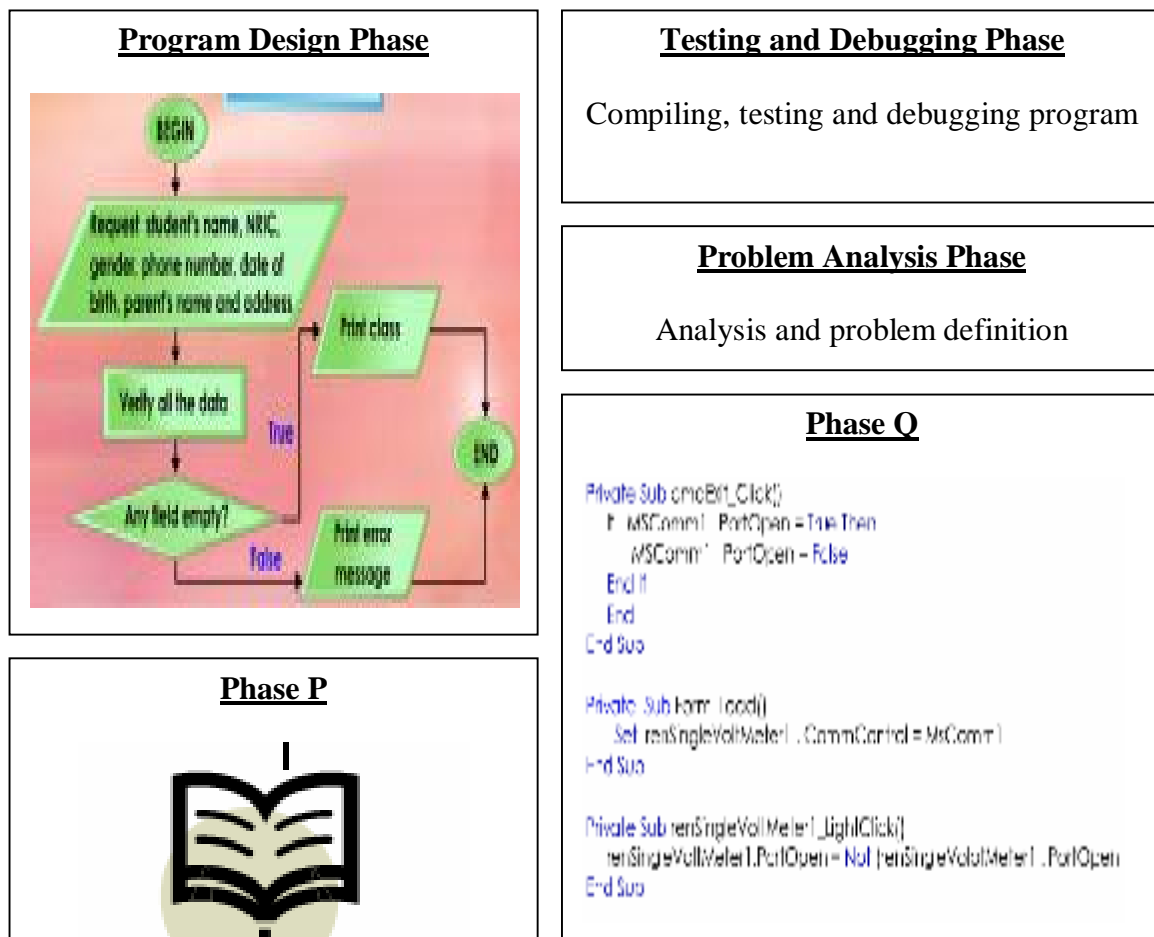


Figure 2

Write your answer for Questions (a) – (d) in the space provided.

(a) Name Phase P and Phase Q (2 scores)

---

---

(b) Arrange the phases in correct sequence. (1 score)

---

---

(c) State two importance of Phase P in Program Development process. (2 scores)

---

---

---

---

(d) Describe any translation method used in Phase Q. (2 scores)

**Total: 7 scores**

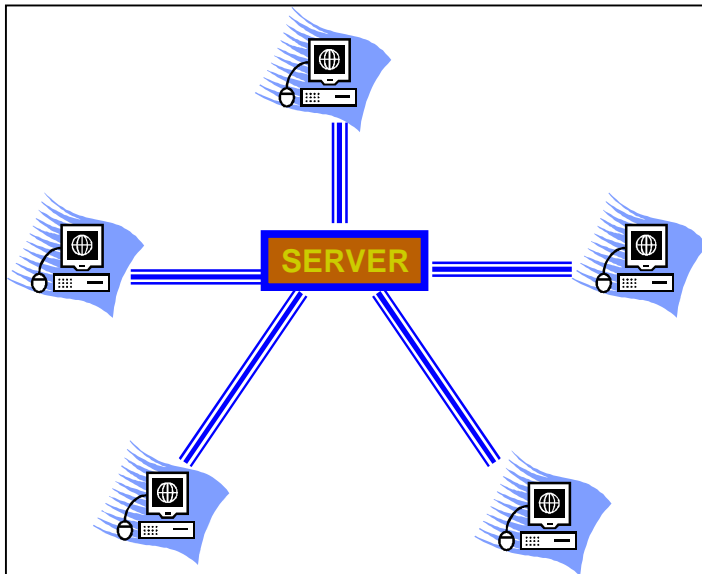
---

---

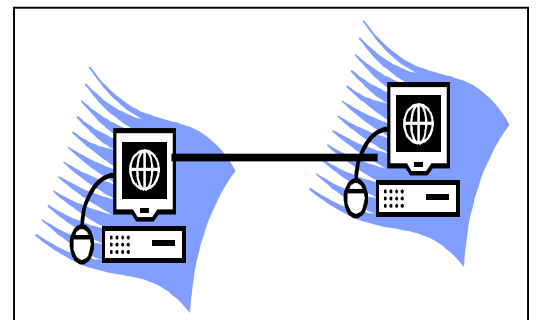
---

---

**Question 3**



**Figure A**



**Figure B**

a) Refer to Figure A and Figure B. Which figure uses a straight cable for connection? (1 score)

\_\_\_\_\_

b) Describe how to create a sharing folder which appears on the desktop. (2 scores)

\_\_\_\_\_  
\_\_\_\_\_  
\_\_\_\_\_

c) Sketch two topologies other than Figure A in the boxes below. (4 scores)

i)

ii)

**END OF QUESTION PAPER**