

Trial SPM 2008  
ICT (GOMBAK) A Q

SCHEME OF WORK

SECTION A  
ANSWER SHEET

NO.		ANSWER	SCORE	ITEM
1	i)	A		1
	ii)	C		2
2	i)	TRUE		3
	ii)	TRUE		4
3		C		5
4		C		6
5		Copyright Infringement		7
6		Byte		8
7	i)	P		9
	ii)	Q		10
8	i)	B		11
	ii)	C		12
9		Executing		13
10	i)	T		14
	ii)	R		15
11	i)	STP / UTP Cable		16
	ii)	Fiber Optic Cable		17
12	i)	R		18
	ii)	S		19
13	i)	C		20
	ii)	A		21
14		Text Based		22
15		Animation		23
16		Non Linear		24
17	i)	Notepad, WordPad, Ms Word		25
	ii)	Pinnacle, Adobe Premier		26
18		C		27
19	i)	S		28
	ii)	P		29
20		D		30
21		Operators		31
22		Data		32
23	i)	People / hardware		33
	ii)	Hardware / people		34
24		Field		35
25		C		36

SECTION B

26.

- a. List **two** examples of computer threat is mentioned in the situation above?  
 1.) Milicious code :- Virus Attack / worm (1m)  
 2.) Hacker (1m)
- b. State **two** things that Haziq can do to enhance the security of his data while accessing the Internet.  
 1.) **Install** antivirus software (1m)  
 2.) **Install** anti spyware (1m)  
 3.) **Install or Use** firewall in his computer network system  
 4.) **Use** cryptography  
 5.) **Create and Use** password for any important data file.

Mesti guna kata kerja.

27.

- a. Component B contains the **control unit** and **arithmetic and logic unit**. State one function for each of the component.  
 Control Unit :- control all activities within the computer system. (1m)  
 Arithmetic Logic Unit :-
- b. Component D can be classified into two categories. State **two** the differences between two of categories.

D is a storage

Primary storage	Secondary storage
Volatile	Non volatile
Non portable	Portable (easy to bring)
Faster to access compare secondary storage in system	Slow to access compare primary storage in system

28.

- a. Name the computer network type:  
 i) Network A: - LAN (1m)                      ii) Network B: - WAN (1m)
- b. State **two** differences between of Network A and Network B.

LAN	WAN	
Low cost	High cost	(1m)
Small network size	Large network size	(1m)
Small number of computers	Large number of computer	
Speed faster than WAN	Speed slower than LAN	

Dua-dua column betul baru dpt 1m

[2 marks]

29.

- (a) State the second phase and the activities that you are going to do in developing the stated project.  
 - Design, the activities involve are draw a flow chat and create a storyboard. [2 marks]
- (b) Explain the role of instructional designer in your team.  
 - to decide on the best educational strategies to use in multimedia presentation about Visit Malaysia Year.  
 - and practices to present the information.

30.

(a) State the items for the program that you are going to develop.

i) Input Item : **Sale for the month, Prizes of item**

ii) Output item : **Discount, Total sales,**

*ada salah satu input item = 1m*

*ada salah satu output item = 1m*

(b) Write a data type of each following:

i) Discount : **Double (1m)**

ii) Total sale : **Double / single (1m)**

### **SECTION C**

31.

a. two table

**TABLE : STUDENT**

Ic no	Student name	class
940723035306	AMINAH DAUD	1AMH
930921105643	ZULKIFLI ABU	2INT
910723035306	HASLINA HASHIM	5SV

**TABLE: SUBJECT**

Ic no	Subject code	Subject name	Subject grad
940723035306	SJ001	SEJARAH T1	A
930921105643	SC002	SAINS T2	A
910723035306	BM005	BAHASA MELAYU T5	A

PERMARKAHAN :

- Ada 2 table dan nama table masing2 = 2m  
(kalau ada table shj / table x lengkap =1m)
- Ada semua field name dlm soalan=1m  
(kalau x lengkap = 0m)
- Ada data lengkap sekrng2 satu rekod = 1m  
(kalau x lengkap = 0m)

b. Primary key : **ic no** (1m)

justifikasi :

- **Ic no** is choosen as a Primary key because it contains a value uniquely (not same with other) identifies each record in he table
- **Ic no** field uniquely identifies each student because no two students can have the same ic number.  
(correct answer with explanation = 2m)

32.

a. suitable NETWORK ARCHITECTURE : **CLIENT-SERVER** (1m)

JUSTIFIKASI : Mesti berdasarkan situasi yg diberi

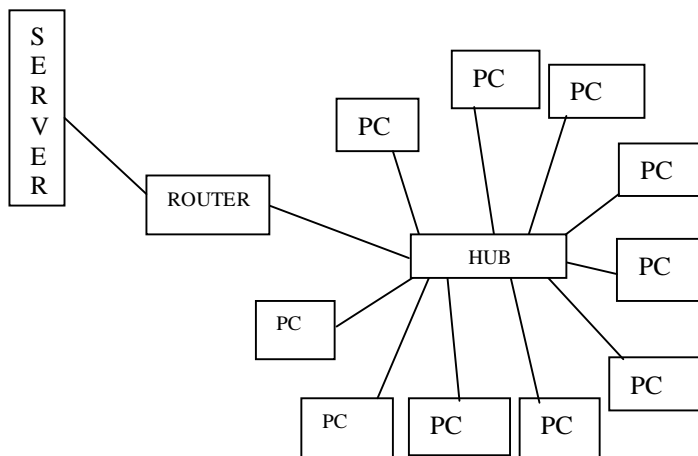
- Have a server, so it suitable to choose client-server. In peer-to-peer we no need a server.
- Server is computer that provides services to other computers called clients. It can share information and resources with other computers on a network. (function of server)

(answer with explainatin = 2m)

b. suitable network topology : **star** (1m)

sketch : (1m)

mesti ada 1 server, 1 hub, 10 pc, 1 Router (optional)

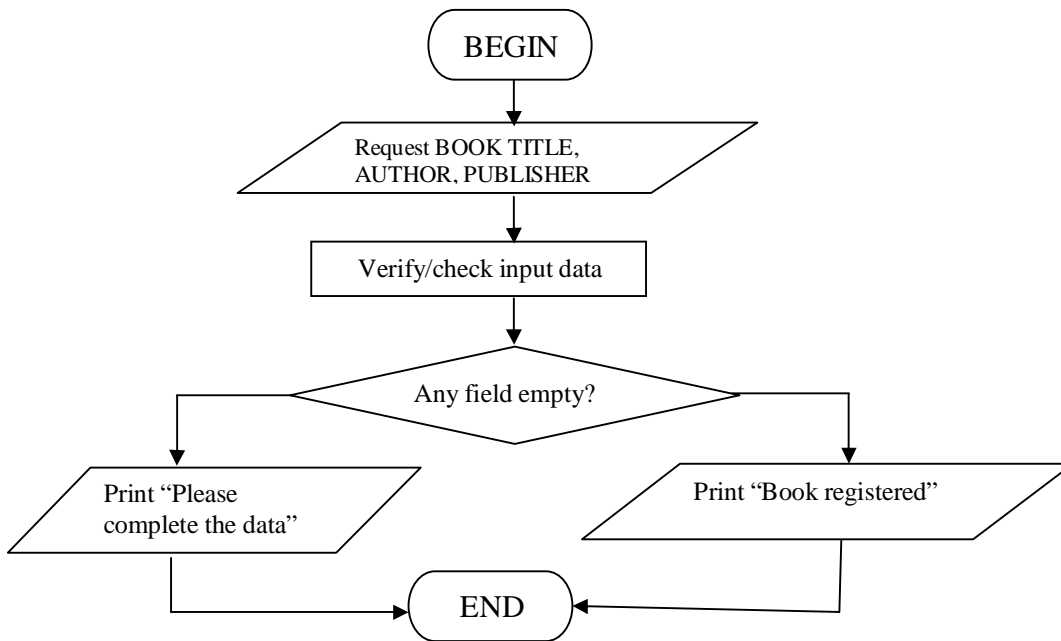


TWO ADVANTAGE OF STAR TOPOLOGY COMPARE WITH OTHERS. (2m)

- Easy to implement compare bus or ring, star topology we only add nodes to the host.
- The failure of a node does not affect the entire LAN, compare with ring failure node will affect the network.
- Compare the others, Star topology is no disruptions to the network when connecting or removing devices.
- Compare the others, Trouble shooting is easy when the host fails. Simply repair or replace the host and the network will continue to function.

33.

a. FLOW CHART



Begin – end - 1m, Shape – 1m, Content – 1, Flow – 1m

c. 3m

Interpreter – (1m)

- Interpreter is used to interpret and execute program directly from its source without compiling it first. (1m)
- The source code of an interpreted language is interpreted and executed in real time when the user executes it. (1m)
- Program that translates and executes one program code statement at a time.
- The interpreter will read each codes converts it to machine code and executes it line by line until the end of program.

OR

Compiler – (1m)

- Program that converts entire source code into machine language before executing it. (1m)
- The source code (in text format) will be converted into machine code which is a file consisting of binary machine code that executed on a computer.
- If the compiler encounters any errors, it records them in the program-listing file.

Answer with explanations (2m)